

Classic VS Series

Auto-Darkening Welding Helmets

Quick Specs

Viewing Area
5.15 sq. in. (33.23 sq. cm)

Operating Modes
Weld, cut and grind

Shades
Cut: 5–8
Weld: 8–13

Sensors 2

TIG Rating 5 amps and below

Switching Speed 1/23,000 second

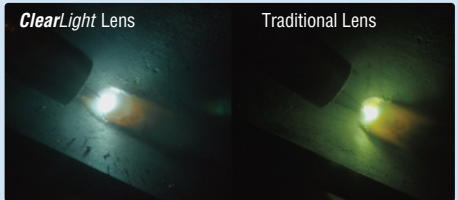
Weight 16 oz. (454 g)



IMPROVED!

All VS models now feature ClearLight™ Lens Technology.

See page 2 for the complete Classic VS Series helmet lineup including the graphic models.



ClearLight™ Lens Technology optimizes contrast and clarity in welding and light states. 1/1 1/2 optical clarity rating allows for a lighter light state while not welding — keeping the helmet down between welds while within arm's reach of the workpiece.

Independent arc sensors provide dependable arc detection.

Auto-on/off power control triggers lens at the strike of an arc.

Meets ANSI Z87.1+ and CSA standards.



Optional helmet lighting accessory kit includes two lights (one for each side) and all required mounting hardware.



Auto-darkening lens is warrantied for three years.



Miller Electric Mfg. LLC
An ITW Welding Company
1635 West Spencer Street
P.O. Box 1079
Appleton, WI 54912-1079 USA

Equipment Sales US and Canada
Phone: 866-931-9730
FAX: 800-637-2315
International Phone: 920-735-4554
International FAX: 920-735-4125

MillerWelds.com




Design Options



NEW!

Metal Matrix™ (VS)
288519



Liberty™ (VS)
287820



Rise™ (VS)
287815



Metalworks™ (VS)
287810



Black (VS)
287803

Ordering Information

Auto-Darkening Welding Helmets	Stock No.	Description	Qty.	Price
Classic VS Series		See above		
Consumables				
Battery, CR2450	217043			
Cover Lens, Outside	231411 / 231411B	5 pack or 50 pack (bulk)		
Cover Lens, Inside	231410	5 pack		
Replacement Parts/Accessories				
Auto-Darkening Lens	287806			
Headgear	770246			
Helmet Bib	253882			
Slotted Hard Hat Adapter	259637	Compatible with most slotted hard hats		
Hard Hat Adapter	222003	Compatible with Fibre Metal and MSA hats		
Helmet Hook	251018			
Helmet Lighting Accessory Kit	282013			

Date:

Total Quoted Price:

Distributed by:

